

from
King, Hunt, Phillips
Presentation at
IMEE Milwaukee
28 May 74
(as read by Glaser)

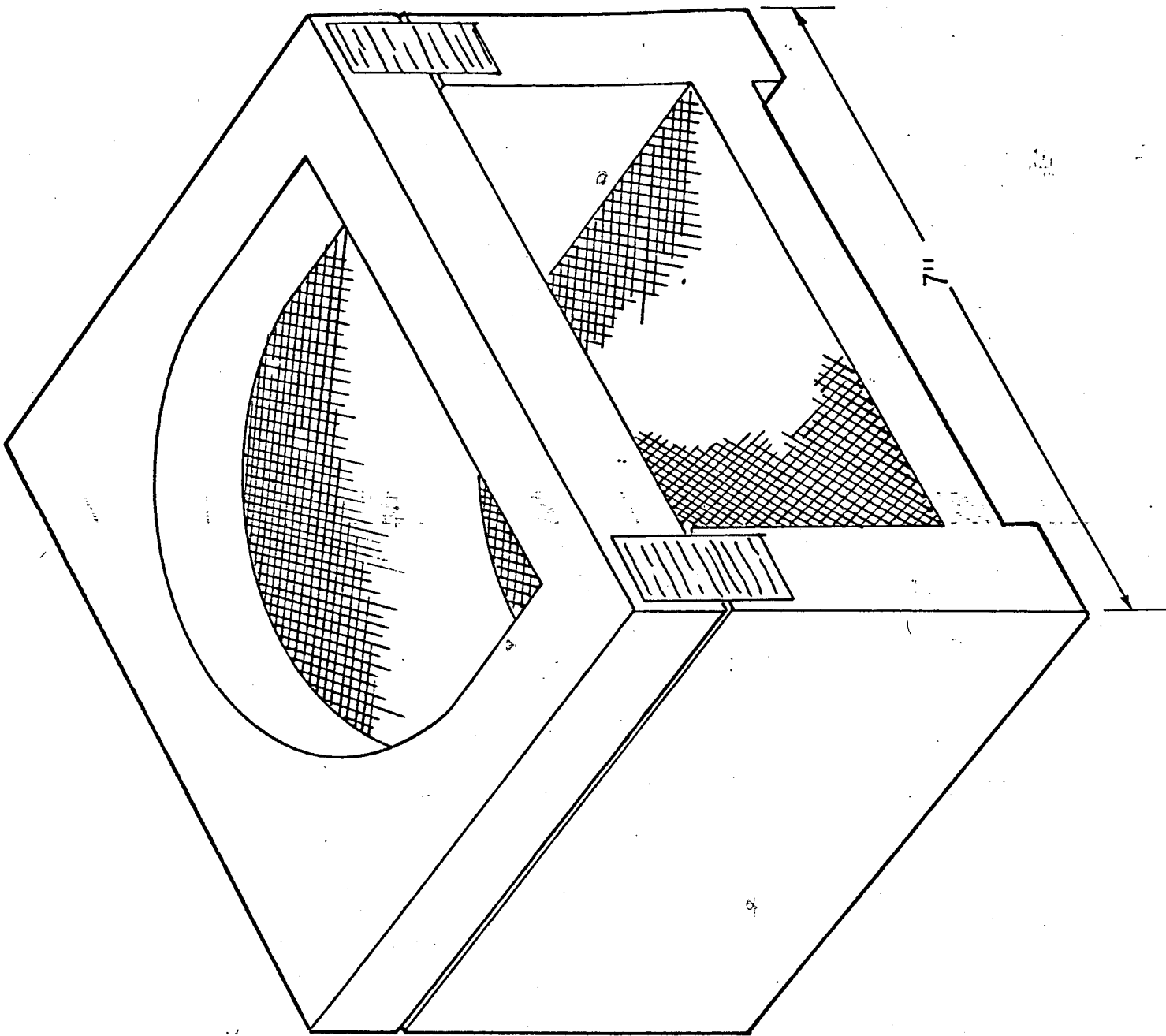


Fig. 1

Fig 2.

Strain	Wt.	N
▲ C57 BL	~16g	10
● C57 BL	~29g	5-10
○ SJL	~25g	5-10

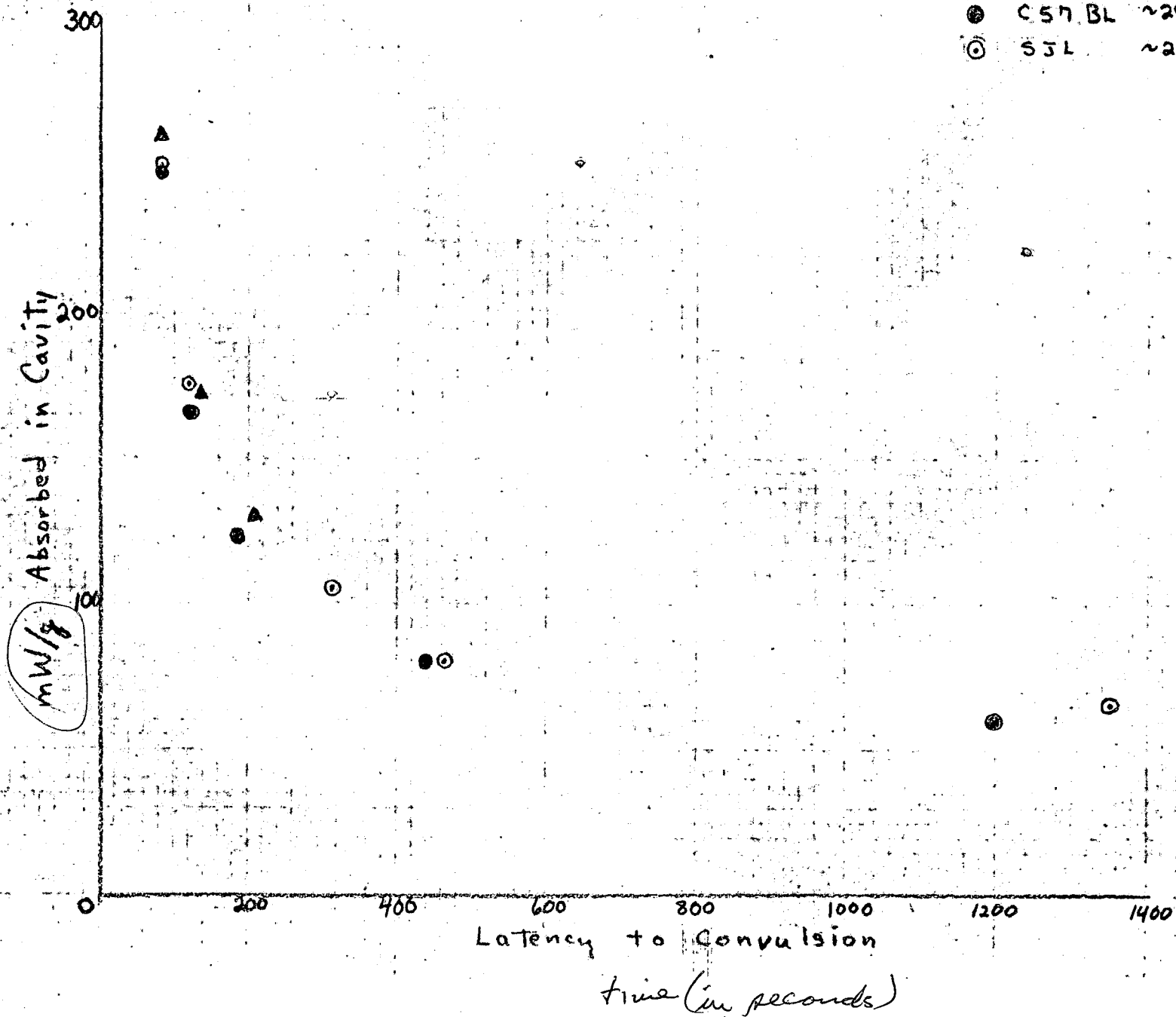


Fig 3.

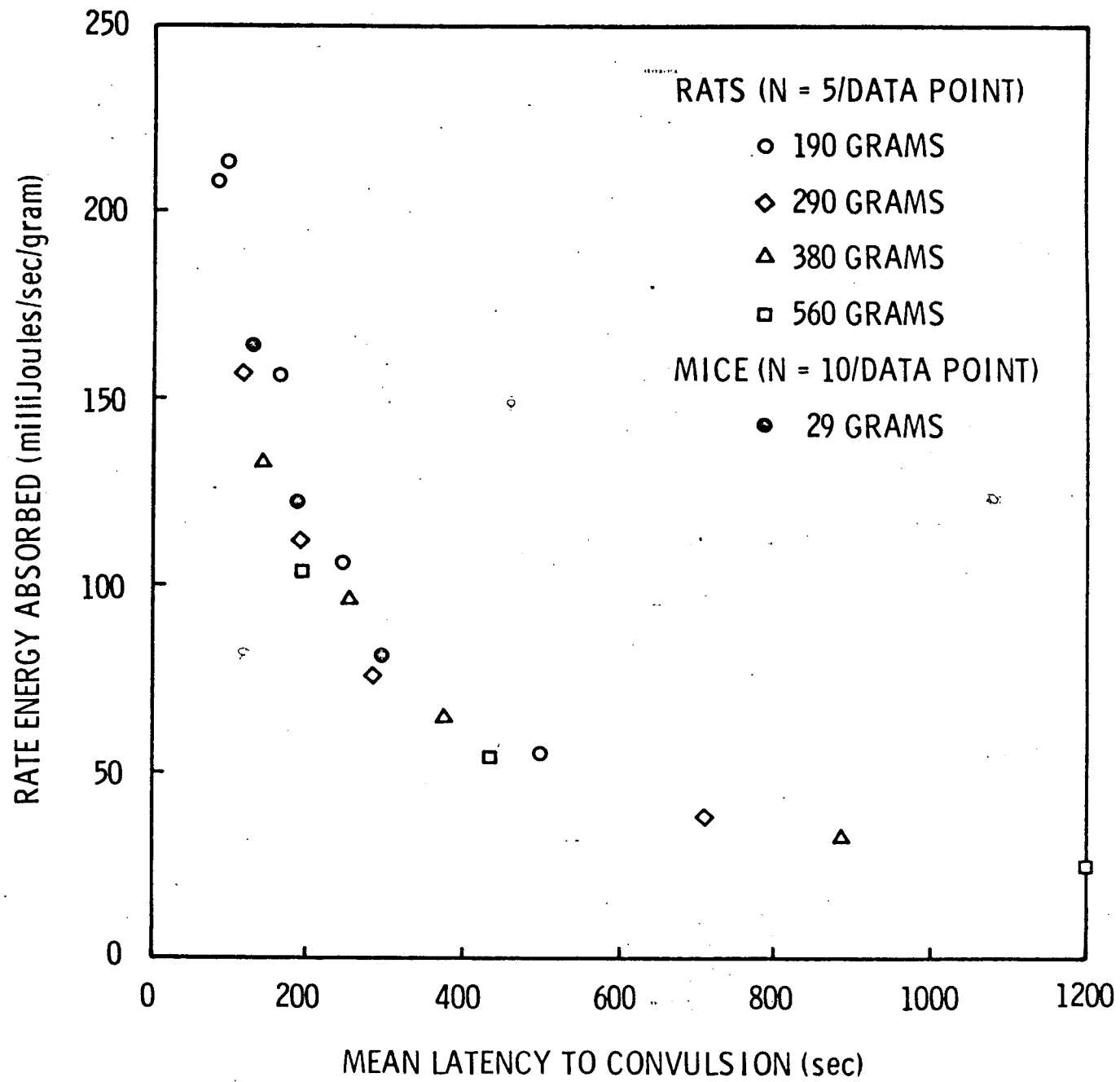


Table 1. Estimated absorbed dose for mouse moving freely in cage in anechoic chamber.

Mouse Strain	<u>N</u>	Distance from horn	Field Power (mW/cm ²)	Latency (sec)*	mW/g absorbed (est. from Fig. 3)
C 57 BL (Black)	5	49 "	117	172±4	130
	5	49 "	102	212±9	114
	5	60 "	75	590±56	70-78
S J L (White)	10	49 "	102	260±12	104
	10	54 "	88	355±15	90
	10	60 "	75	690±75	68-93

* Mean ± SE_M